



DANIELLE KIMZEY
Viewfinder

GALLERI URBANE MARFA + DALLAS

Viewfinder

Kimzey finds an interest in her experience of time, though not in a grand, scientific manner, but rather in the quiet, often-overlooked moments that mark her daily existence. Dwelling on these episodes for longer inspection, Kimzey considers them from multiple viewpoints, translating them into complex, vibrant abstractions. In the painting *Dog Eared* (2018), for instance, Kimzey reflects on her nightly ritual of reading under a blanket, flashlight in hand, to keep from disturbing her sleeping partner. The ongoing repetition of this nightly activity activated an interest in Kimzey to portray this lived experience from not her own point of view, but that of the blanket itself. The bright glare of a flashlight and the constant folding and movement of the blanket throughout the night are recorded in this geometric composition, proposing that our daily interaction with otherwise insignificant objects can become a method of archiving our existence.

Throughout the series there remains a tension between order and disorder, chaos and balance. Carefully executed structures are painted only to be broken apart and then built in a new way. Through this process, Kimzey is allowed to produce paintings that become heirlooms of the spaces and objects around her. These commemorative objects, however, do not set out to render these subjects in photographic detail, but rather seek to depict the elusive, immaterial experiences that they generate.



DANIELLE KIMZEY is an artist who lives and works in Dallas, Texas. She received an MFA in Painting from the University of Iowa and a BFA in Drawing from Southern Methodist University. Danielle has participated in multiple shows in the Midwest, Southern California, New York, and Dallas. In 2012 she was invited to be the Box Artist-in-Residence at Knox College in Galesburg, IL where she had a solo show at the Box Gallery. Her work has been included in group shows curated by Susan Chrysler White at the Peter Paul Luce Gallery and by Mary Laube at the Times Club in Iowa City, IA. Most recently she has shown her work at Peripheral Vision Arts, the Hawn Gallery at SMU, and in group exhibitions at Galleri Urbane Marfa + Dallas. She currently teaches art at TCU and El Centro College.



Viewfinder, 2018, installation view



Viewfinder, 2018, installation view



Viewfinder, 2018, installation view



Viewfinder, 2018, installation view

Larger Works 36 x 36, 48 x 48, 50 x 60, and 72 x 60 inches
2017-18



Beach Umbrella, 2017
Acrylic and gouache
on wood panel
36 x 36 inches
\$3,200



Morning Chemistries, 2017
Acrylic and gouache
on wood panel
36 x 36 inches
\$3,000



Daylight Savings, 2018, acrylic on wood panel, 48 x 48 inches
\$3,800



Drawing Lesson, 2018, acrylic on canvas, 50 x 60 inches
\$4,800



Butterfly, 2018, acrylic on canvas, 50 x 60 inches
\$4,800



Dog-Eared, 2018
Acrylic on canvas
72 x 60 inches
\$6,200



Waking Up in a Tiny House, 2018
Acrylic on canvas
72 x 60 inches
\$6,200

Smaller Works - 16 x 16, 12 x 12 inches

2017-18



*Bravest Woman
in America, 2017*
Gouache on panel
16 x 16 inches
\$1,400



Swim Lessons, 2017
Gouache on panel
16 x 16 inches
\$1,400



The Peak, 2018
Gouache on panel
16 x 16 inches
\$1,400



Where You Are, 2017
Gouache on panel
16 x 16 inches
\$1,400



Bird in Flight, Saturday Night
2018
Gouache on panel
12 x 12 inches
\$1,100

Older Works - 16 x 16, 20 x 16, and 10 x 10 inches

2015-16



Sympathizer, 2016
Gouache on panel
16 x 16 inches
\$1,400



Hold You, 2016
Gouache on panel
16 x 16 inches
\$1,400



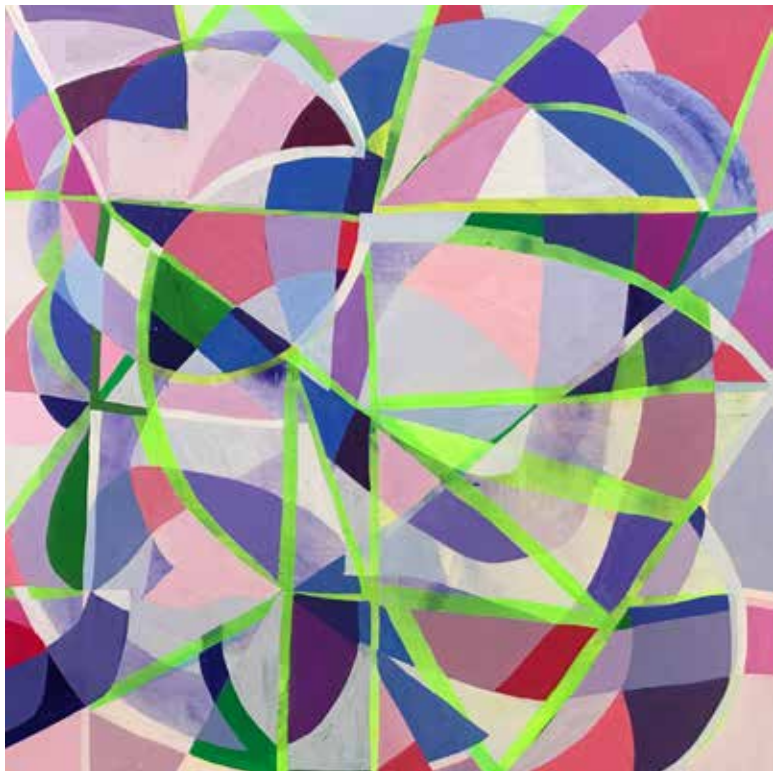
First Pony, 2015
Gouache on panel
16 x 16 inches
\$1,400



Flashlight, 2016
Gouache on panel
20 x 16 inches
\$1,400



Grouping Pairs, 2016
Gouache on panel
10 x 10 inches
\$975



Strawberry Moon, 2016
Gouache on panel
10 x 10 inches
\$975

GALLERI URBANE

2277 Monitor St. Dallas TX 75207

galleriurbane.com

325.226.8015

art@galleriurbane.com