

Sun Systems

Samantha McCurdy



GALLERI URBANE

Sun Systems

Samantha McCurdy

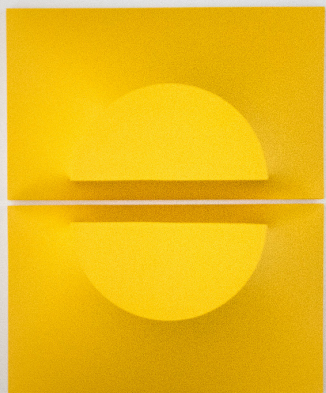
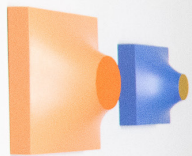
October 12 - November 16, 2019

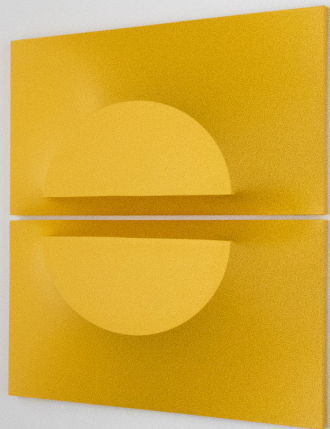
Returning for her second solo exhibition with Galleri Urbane, Samantha McCurdy presents *Sun Systems*. The exhibition includes a new collection of the artist's signature shaped paintings created by stretching spandex fabric over concealed objects to generate forms that reach out beyond the standard, rectilinear picture plane. In contrast to McCurdy's previously created objects that have referenced the human body, including those in her 2018 exhibition *Personal Boundaries*, this body of work invites viewers to consider them in relation to celestial bodies of the universe.

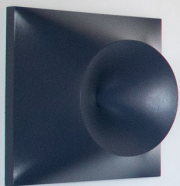
Presenting an installation that references the Sun, planets, moons, dwarf planets, and black holes, McCurdy is driven by an interest in mankind's quest to understand the mysteries of outer space. Despite the limited knowledge it can procure due to unfathomable physical distance and unseen forces, man persistently seeks answers. She sees this condition akin to viewers' desires to discern the construction of her work: thin, painted spandex hides the mechanisms that create each object's protrusions, yet an urge to uncover what lies beneath remains. A fascination with these boundaries, whether physical or mental, micro or macro, remains at the core of McCurdy's practice.

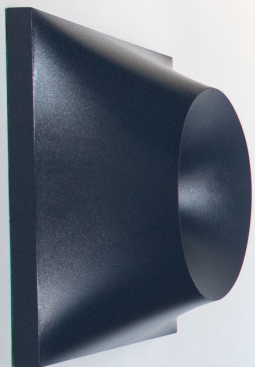
All of the known planets in our Solar System are represented in *Sun Systems*. As in nature, the installation is anchored by the largest entity, the Sun, and surrounded by interpretations of each planet from Mercury to Pluto. The single and multi-panel wall sculptures reflect each entity's characteristics, ultimately captured through a deliberate execution of minimal form and color. Neptune, for instance, is represented in *Faint Ring in Liquid Ice* (2019). Alluding to the ice planet's barely-visible rings, a circular disc juts out at an angle, its rim forming a ring that swoops out and returns to vanish beneath the cool, lavender-blue surface. The spandex in other works referencing black holes is stretched back through the support, creating a spherical void in the object. McCurdy increases the complexity of form found in many of these works, introducing nuanced parabolic curves and pieces that both protrude and retract in a singular composition. This direction serves as a testament to the ever-expanding development of her craft.

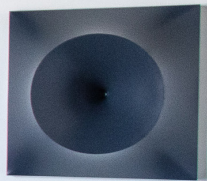
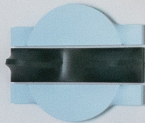
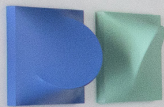
Sun Systems is an inquiry into our perception of things known and unknown, seen and unseen. As the atmosphere serves to be a thin veil that separates our ability to experience first-hand and understand what lies beyond, so does McCurdy's expert use of spandex. Even so, her paintings continue to ignite curiosity and a longing to delve deeper.

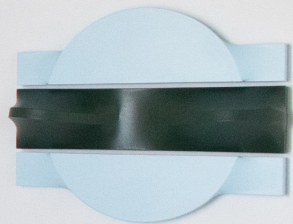
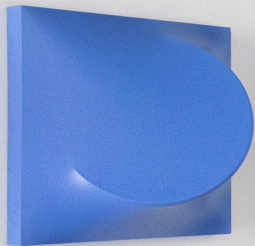


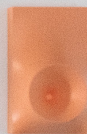
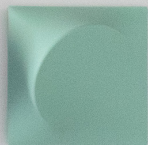












Selected Artworks

Full checklist available by request



Neptune (Faint Ring in Liquid Ice), 2019
Wood, spandex, and latex
22 x 22 x 12 in.



Venus (Slow Twirls, My Sister Shines the Brightest), 2019
Wood, spandex, and latex
18 x 18 x 8 in.



Sun, 2019
Wood, spandex, and latex
73 x 60 x 12.50 in.



Uranus (Long Game, The Tilted Truth),
2019
Wood, spandex, and latex
22 x 22 x 12 in.



Jupiter (Circulation and Desire), 2019
Wood, spandex, and latex
60 x 44 x 8.50 in.



The Escapist, 2019
Wood, spandex, and latex
20 x 12 x 6 in.

About the Artist

Samantha McCurdy is a native of Philadelphia and graduated from the Maryland Institute College of Art in Baltimore. Her work has been included in gallery exhibitions in Philadelphia, Dallas, Los Angeles, New York City, London, and Paris, and she recently completed a site-specific installation at The Standard, Hollywood hotel. McCurdy has previously exhibited work at the Dallas Art Fair as well as the inaugural edition of Spring/Break Los Angeles. In addition to her own practice, Samantha also runs an art space and intellectual pavilion called That That, which relocated with her move from Dallas to Los Angeles in 2016.

GALLERI URBANE

2277 Monitor St.
Dallas, TX 75069

325-226-8015
galleriurbane.com